

The Telegraph

[View gallery](#)

About our reviews



All hotels have been independently reviewed by our expert writers, who are usually hosted on a complimentary basis. We will earn a commission if you book via the links below, but this never affects our rating. Learn more by expanding below or visiting our [About Us](#) page.

Grand Forest Metsovo

Metsovo, Greece

[View on a map](#)

9

_{/10}

Telegraph expert
rating

"This luxury alpine retreat is perched on its own private mountainside in Greece's Epirus region. A natural setting and top-notch spa ensure complete relaxation, while superb cuisine paired with local wines and regional excursions complete the experience."



Check availability

Rooms from
£188 per night

CHECK-IN

Fri 15 Mar



CHECK-OUT

Tue 30 Sept



OCCUPANCY

1 room, 2 adults, 0 children

[Check availability](#)

Rates provided by [Booking.com](#)

Telegraph Review



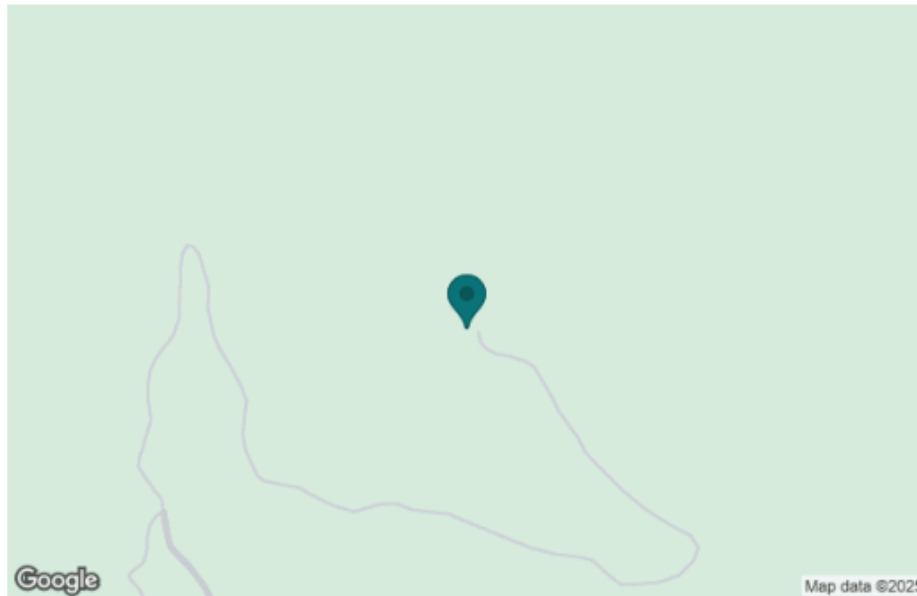
Katie Monk TRAVEL WRITER

23 September 2025 5:03pm BST

9/10

Location

The hotel is located between Ioannina to the west and Meteora to the east, with the historic town of Metsovo just across the valley. Ioannina airport is a 45-minute drive through the Pindus Mountains. [Thessaloniki](#) airport is two and a half hours away by car, while both Kalabaka and the world-famous Meteora monasteries are a 55-minute drive – ideal for a day trip.



8/10

Style and Character

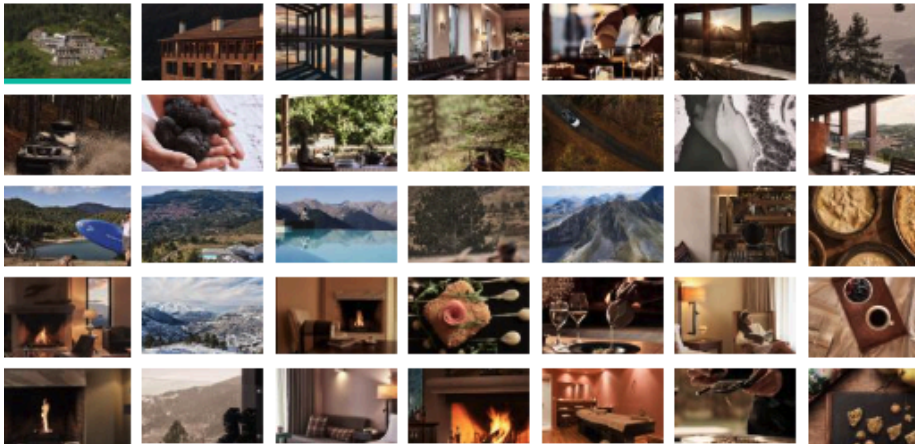
The 62 suites are spread across eight buildings with stone façades, wooden balconies and exposed beams. Floor-to-ceiling windows maximise the views, stone and wood add a rustic touch, and the public spaces are dotted with antiques, agricultural pieces and colourful local textiles.

A central fireplace makes the open-plan reception and Lobby Bar a warm and inviting space to hang out, while the outside terraces have fire pits and leanback chairs – perfect for sundowners overlooking the Pindus Mountains and Metsovo below.

In summer, the outdoor infinity pool is a real plus, with sun loungers and four-poster beds that make for a truly relaxing spot to unwind.



1 of 35



[See more images at Booking.com](#)

9_{/10} Service and Facilities

Although it's a member of Leading Hotels of the World, this is very much a family-run hotel and almost everyone hails from Metsovo or the surrounding area, meaning you're guaranteed a genuine local welcome. Service is first class and strikes the right balance between personal and professional. I loved that they brought jugs of iced water, towels and bowls of ice cream as soon as I arrived at the outdoor pool.

A selection of well thought-out signature experiences whisk you off to the region's best bits. There's skiing, snow-hiking and canyoning. The truffle-hunting with dogs takes you into the forest for foraging and river-swimming; the horseback riding is a foray into the private mountain reserve behind the hotel, complete with a picnic lunch; and the e-biking and stand-up paddleboarding have you adventuring with Winter Olympian Lefteris Fafalis, no less.

The Aspen Spa has a private sauna and steam room, and the therapists are top of their game. I was seriously impressed with the facials and massages I received, and overheard another lady asking if she could take her therapist home. The indoor pool also has a sauna and steam room and views over the mountains. The indoor gym overlooks the infinity pool.

- | | |
|---------------------|------------------|
| ✓ Bar | ✓ Fitness centre |
| ✓ Kids' club | ✓ Laundry |
| ✓ Parking | ✓ Pool |
| ✓ Restaurant | ✓ Room service |
| ✓ Sauna | ✓ Spa |
| ✓ Steam room/hammam | ✓ Wi-Fi |

9_{/10}

Rooms

The 62 suites span six categories, with homely natural décor, wooden floors, marble bathrooms and tartan blankets draped across the beds. Junior Suites with Garden View face the forest canopy, while the Mountain View suites have private patios overlooking the Pindus. Superior and Panorama suites have their own balconies and fireplaces.

Each suite comes with both a bathtub and separate walk-in shower, plus a minibar with a selection of teas, a proper coffee machine and two small jars of local preserves that you often find in Greece, and which are so much better than anything mass-produced.

The showstopper is the Grand Forest Suite, with its separate living room, two bathrooms and unobstructed views across the valley and pine forest.

Food and Drink

The main restaurant, Metsovo 1350m, has dishes that really showcase the region's fresh produce – think wild mushroom ragout, renowned Metsovo cheeses and marinated trout from the Aaos river. The setting, with its sweeping views, is the icing on the cake. Wines include the excellent Traminer by Averoff Estates in nearby Metsovo.



Breakfast at Grand Forest Metsovo is a colourful spread of hot and cold dishes

The more intimate Pines room offers a private dining experience with a tasting menu and curated wine pairing. I enjoyed sea bass carpaccio and Ambrascian shrimps. Two roaring fires make this the ideal winter hideaway. The Lobby Bar has an all-day dining menu that can be taken on the terrace, by the pool, or indoors by the fire, depending on the weather. The smoked trout on toast really hits the spot.

Breakfast is a colourful spread of hot and cold dishes, including mountain honey, fig jam, and Metsovo's delicious wine cheese. À la carte options include omelette with earthy forest mushrooms and *strapatsada* eggs – similar to *shakshuka* or Turkish *menemen*.

Value for Money

Double rooms from £240 in low season; and from £500 in high. Breakfast included.

Access for guests with disabilities?

A select number of rooms and bathrooms are adapted for guests with limited mobility. Buildings are connected to the main one via a lift and closed corridors for year-round access. There is a second inclined entrance.

Family-Friendly?

Child-friendly dishes can be prepared on request. Guests under 18 can enjoy the indoor pool between 10am and 12pm, under adult supervision.

Some doubles are equipped with a sofa bed for children up to 11 years old. The Grand Forest Suite with Metsovo View can take up to three adults or two adults and two children (up to 11 years old). Additional guests at the Grand Forest Suite are accommodated on rollaway beds. Complimentary cots are provided for infants up to two years of age.

Children younger than three years old stay free of charge, while children between three and 12 years old incur a charge of €35 [£30] per day. Adults have an additional cost of €50 [£43] per day. Babysitting is available, too.

📍 Interchange 7A to Anilio Metsovo, Epirus 442 00, Greece.
00 30 2656 029 001
grand-forest.gr